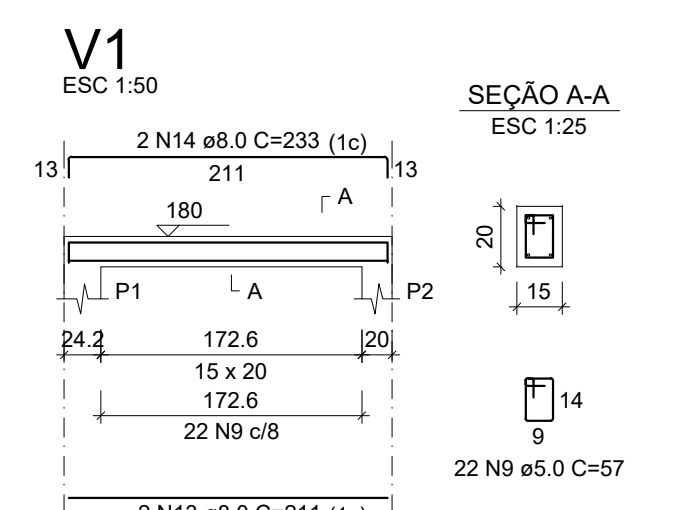
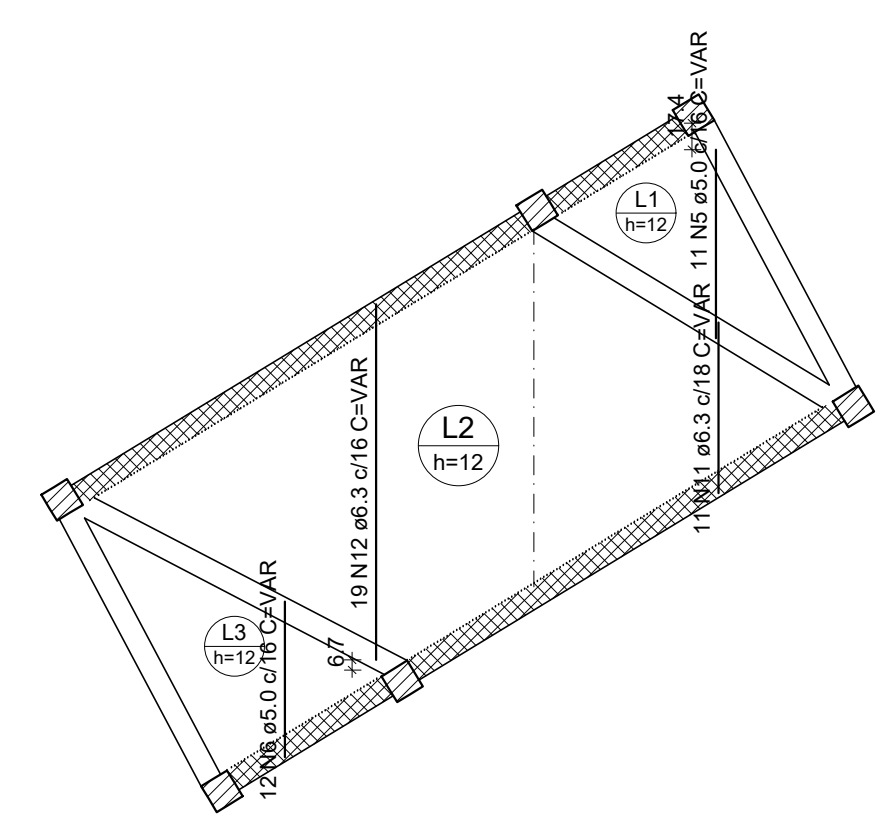
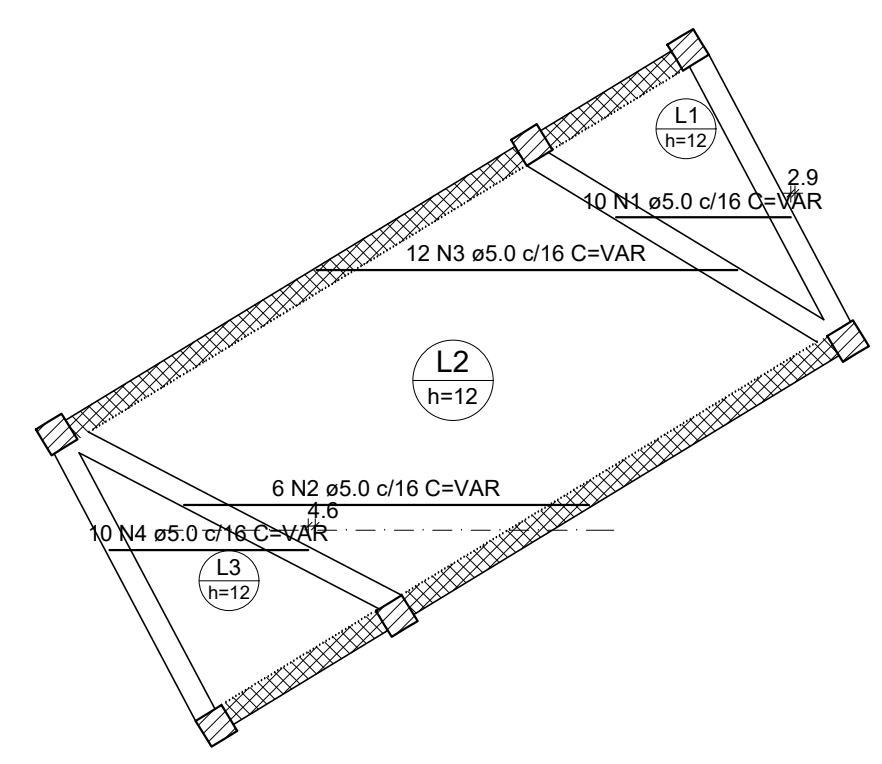
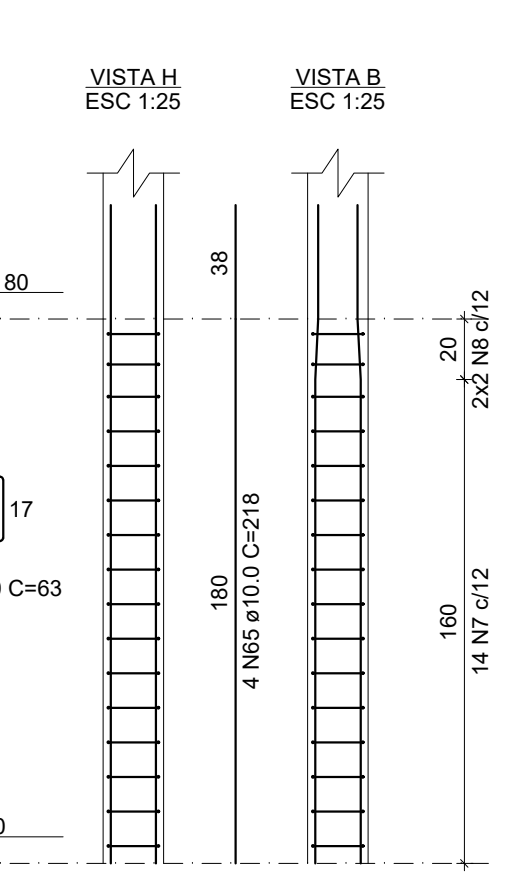
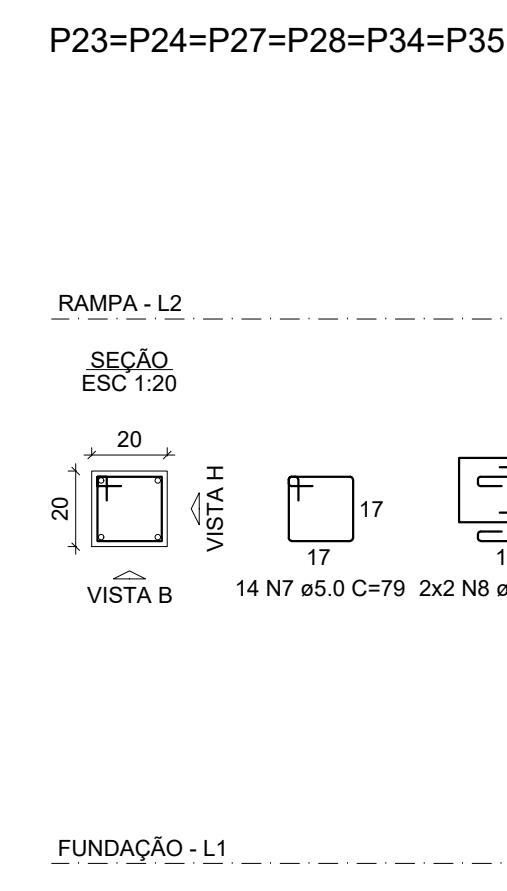
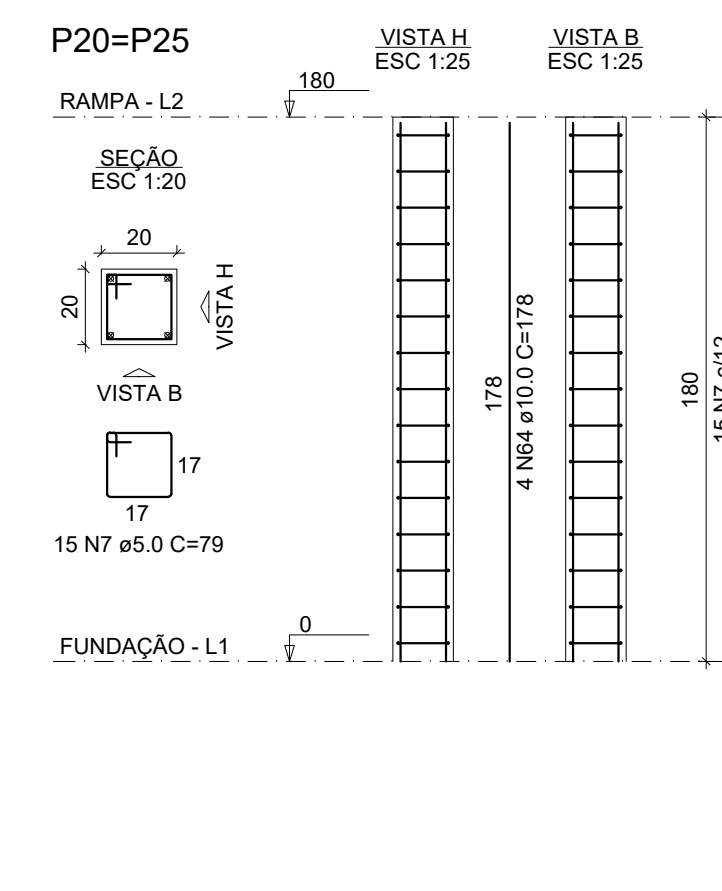
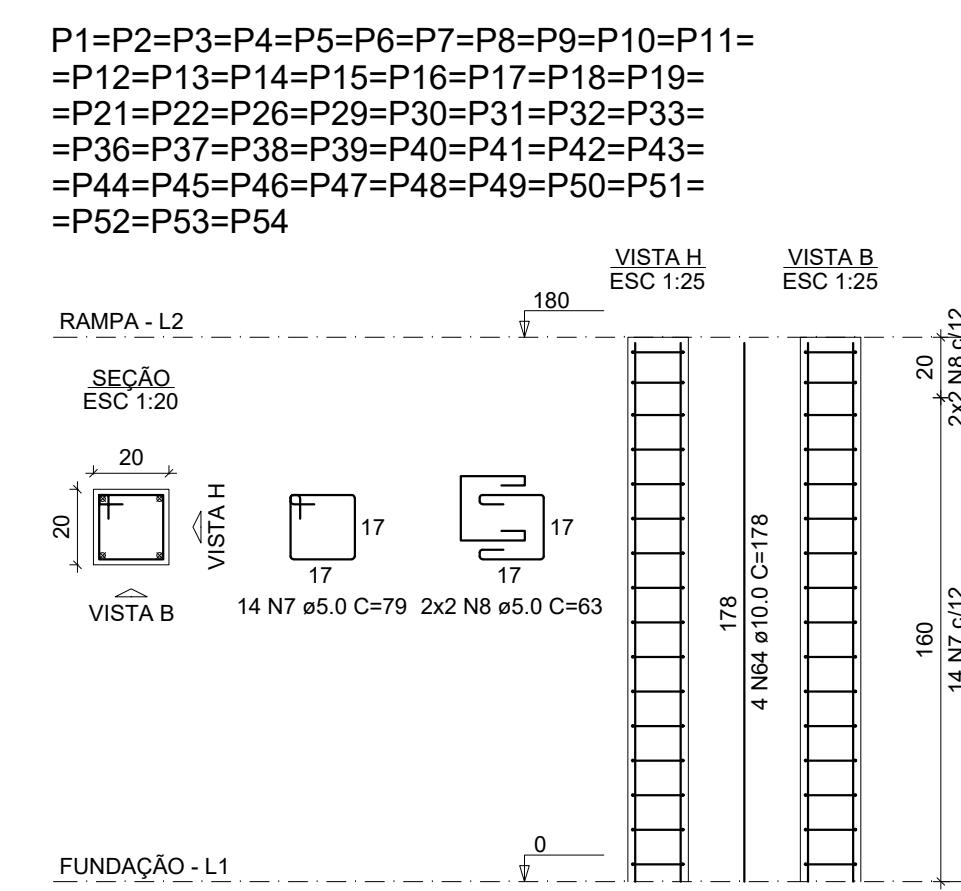


P1=P2=P3=P4=P5=P6=P7=P8=P9=P10=P11=
 =P12=P13=P14=P15=P16=P17=P18=P19=
 =P21=P22=P26=P29=P30=P31=P32=P33=
 =P36=P37=P38=P39=P40=P41=P42=P43=
 =P44=P45=P46=P47=P48=P49=P50=P51=
 =P52=P53=P54



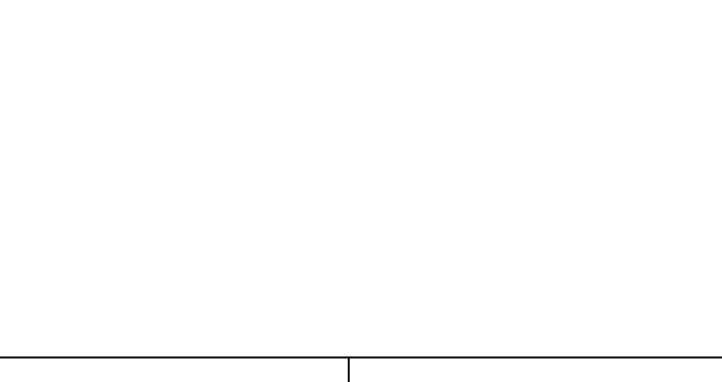
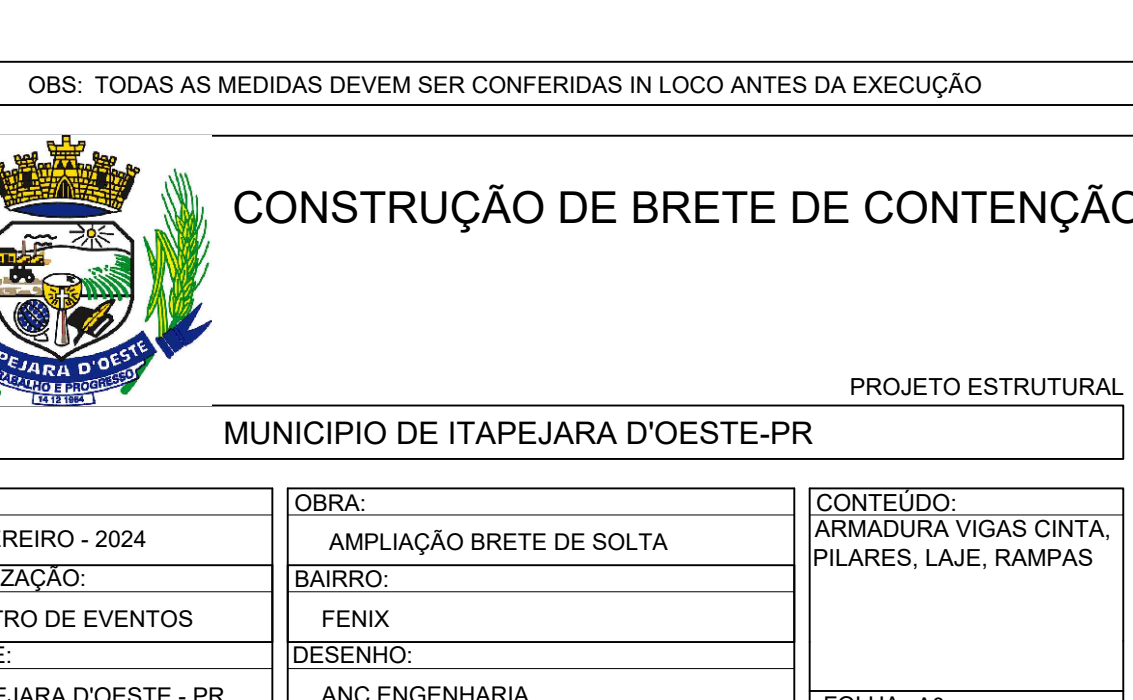
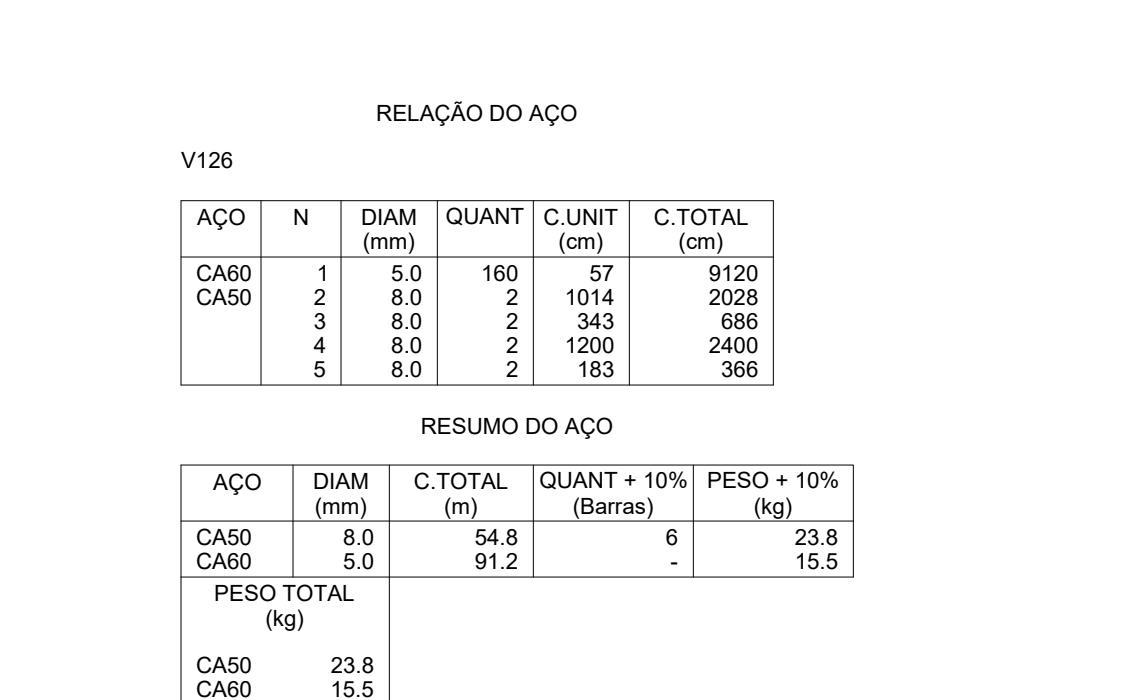
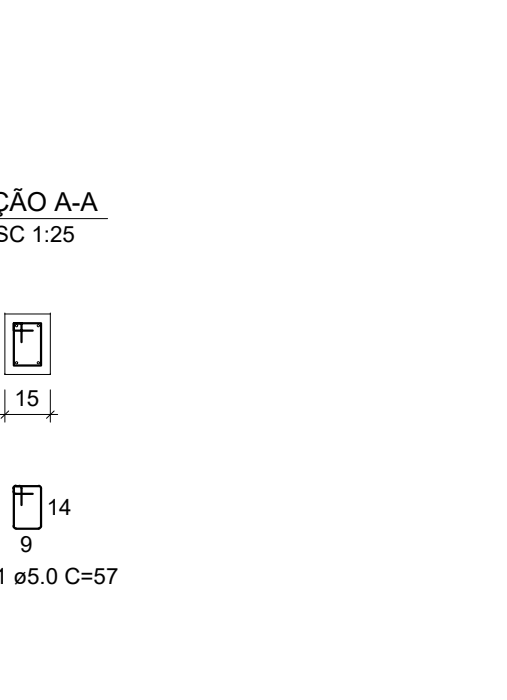
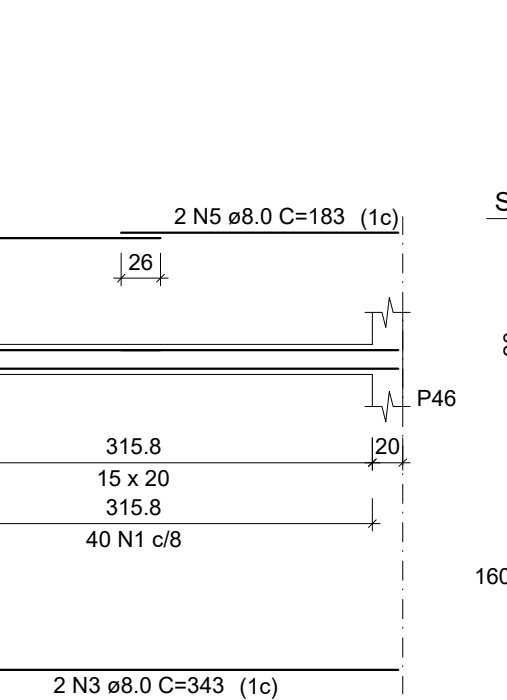
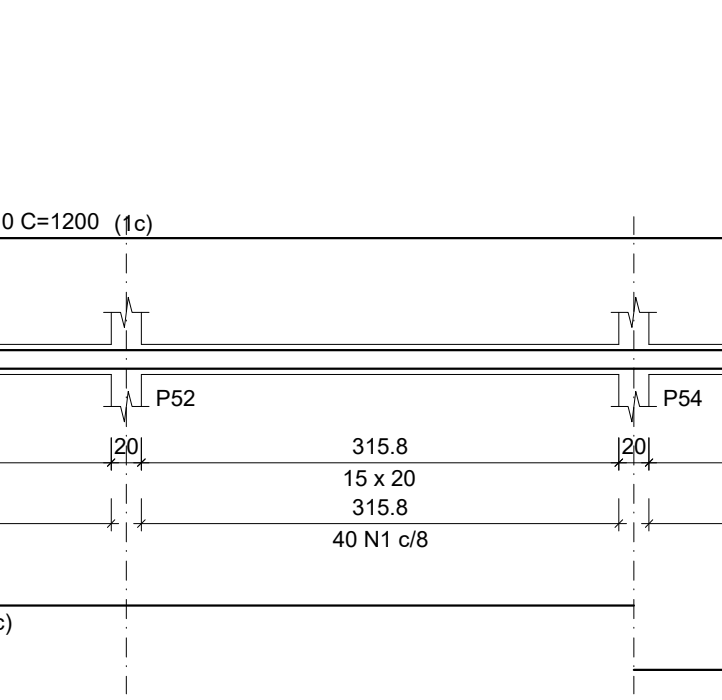
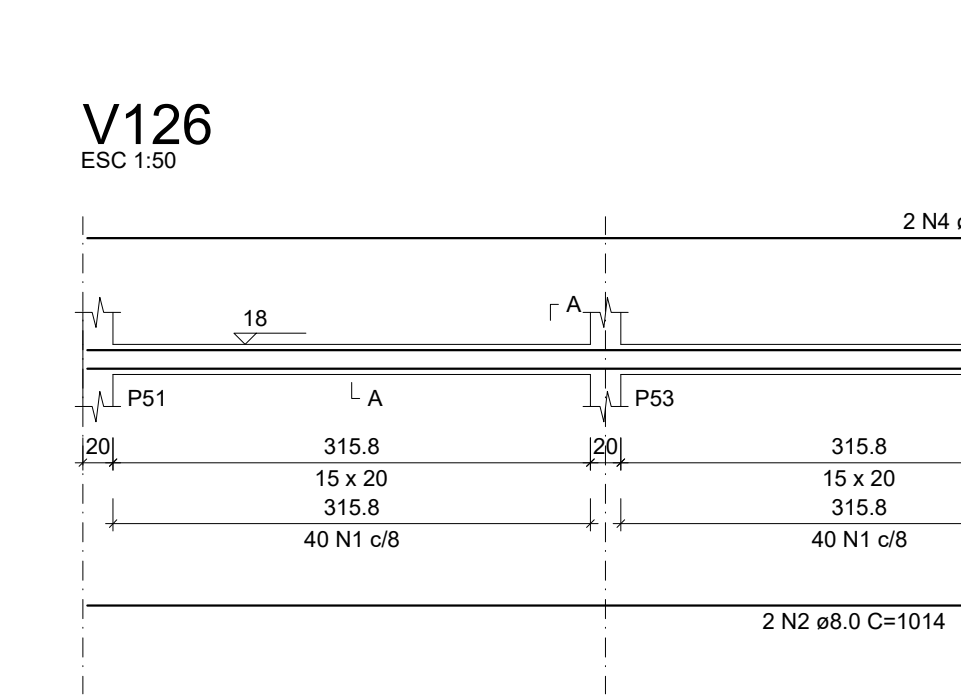
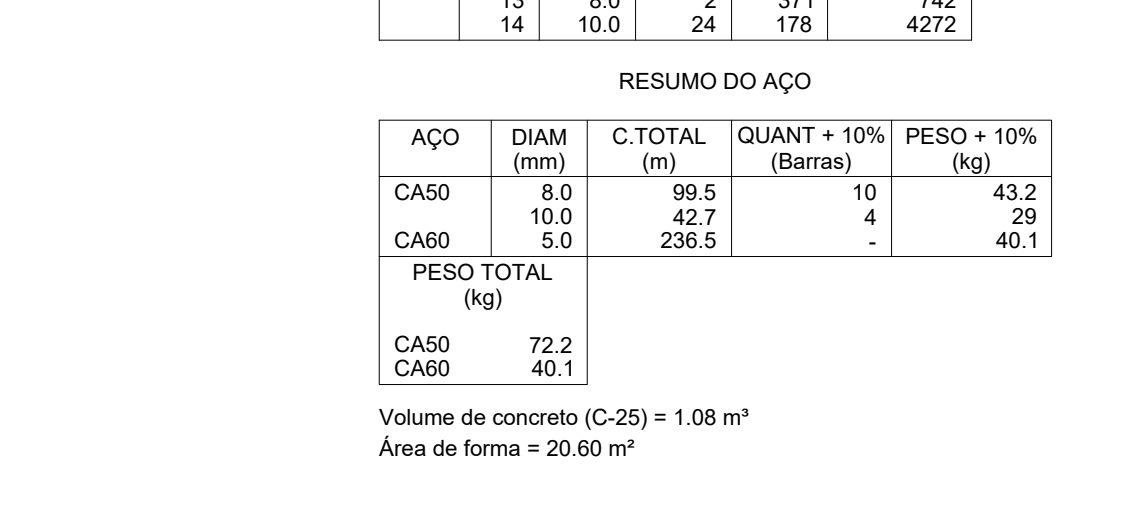
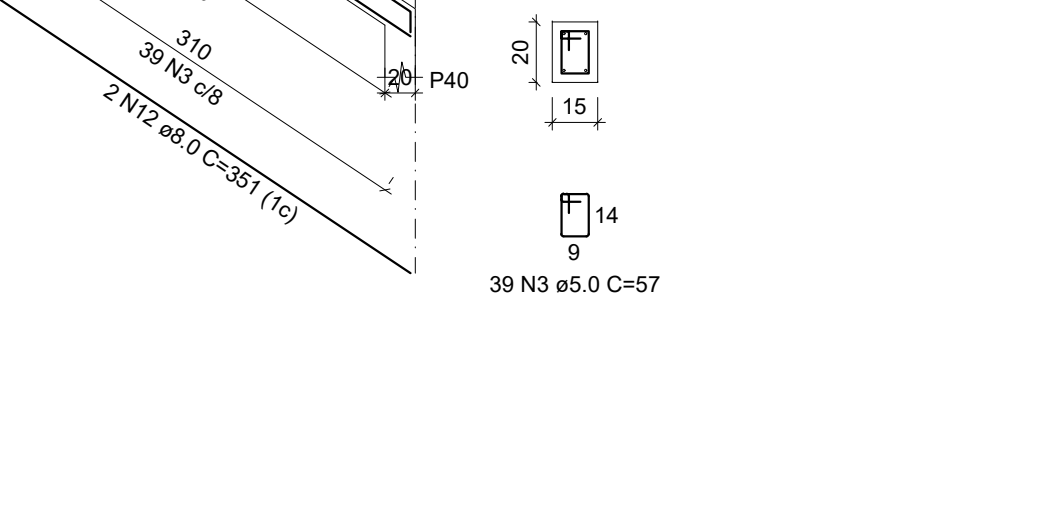
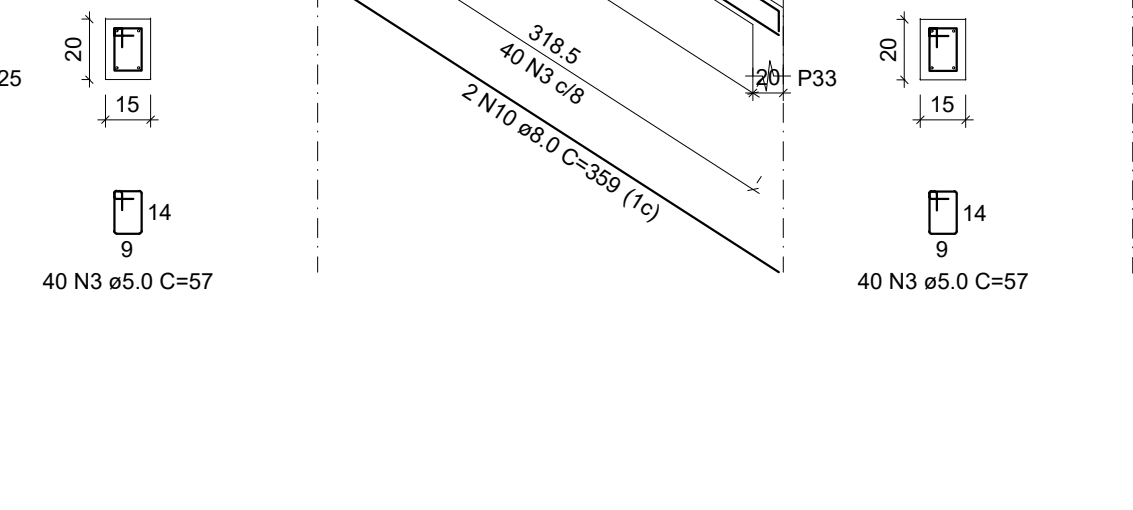
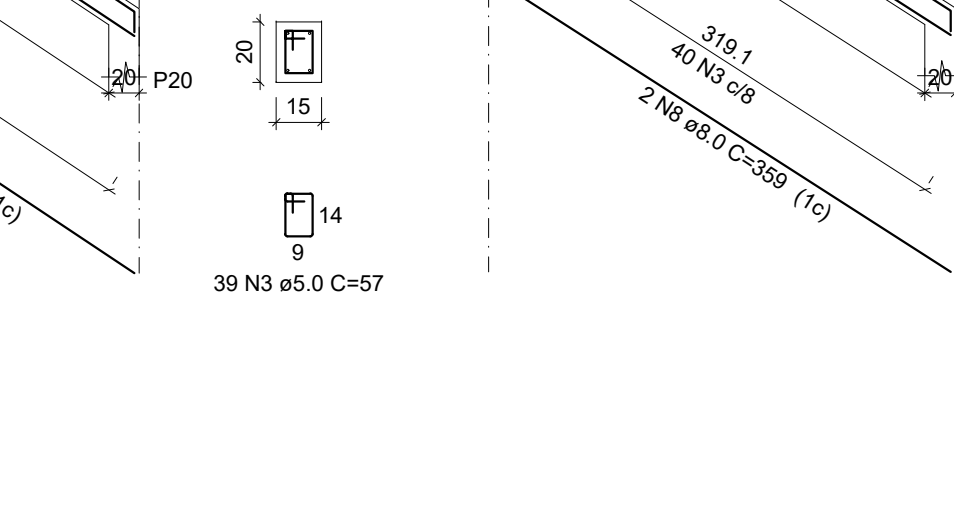
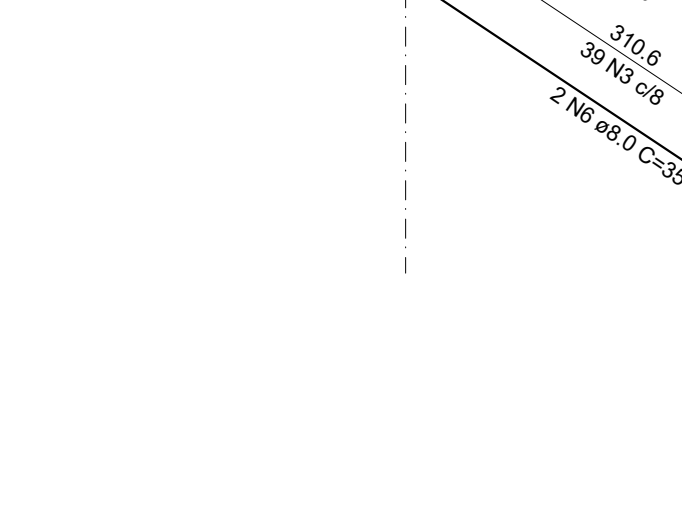
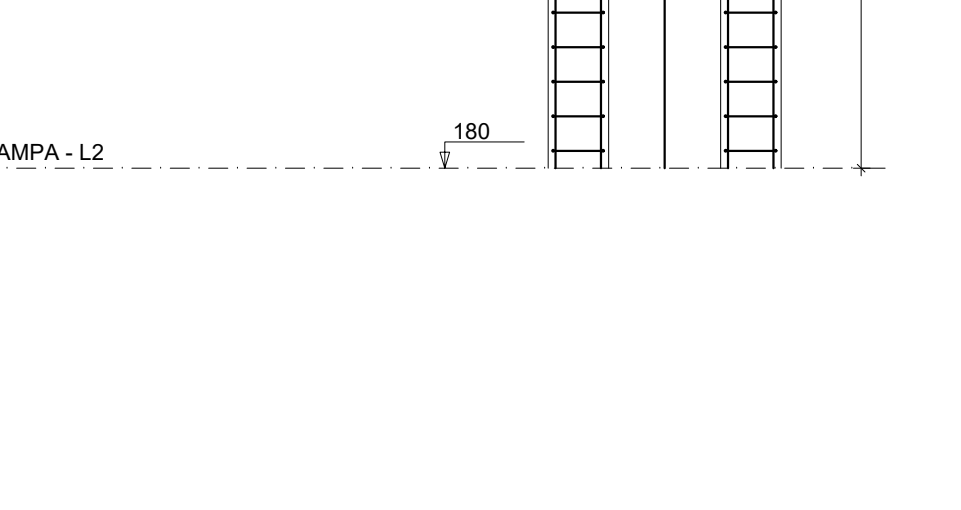
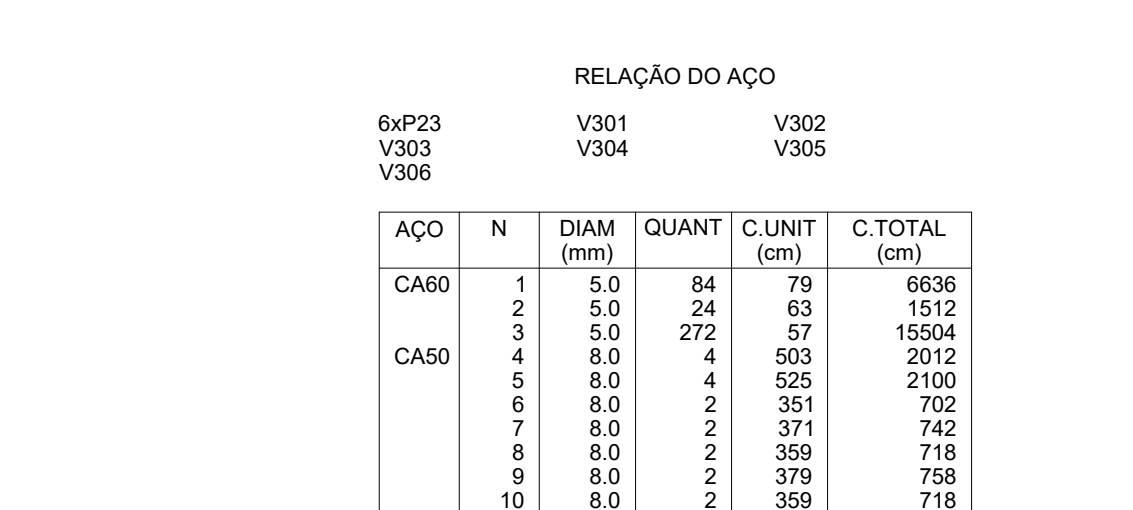
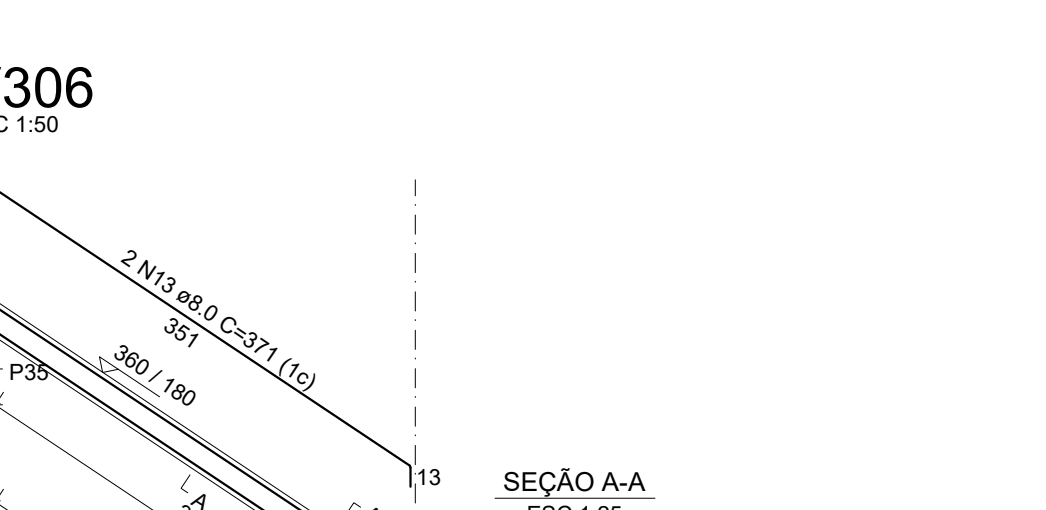
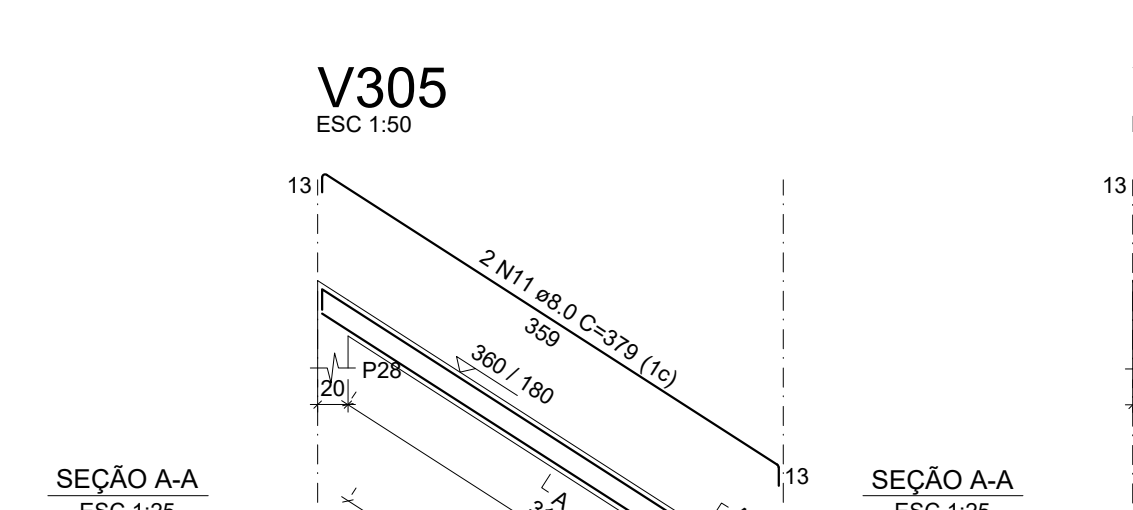
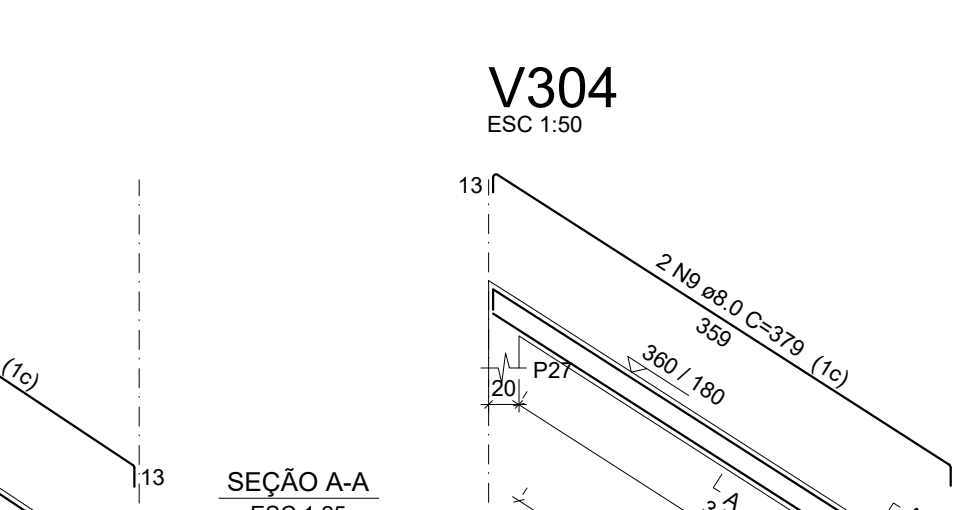
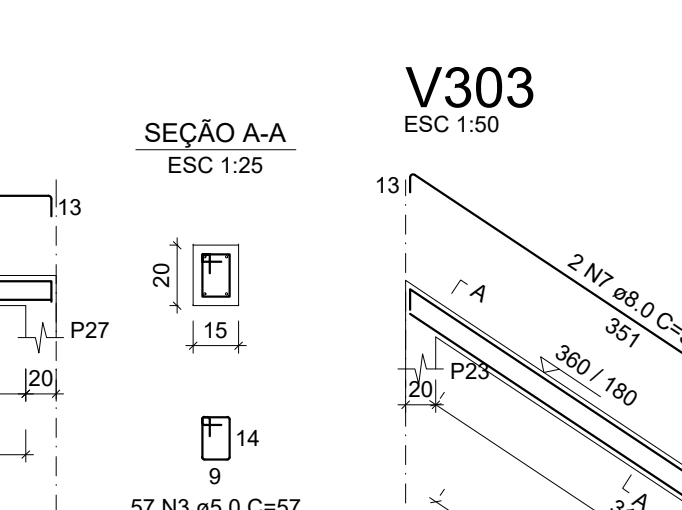
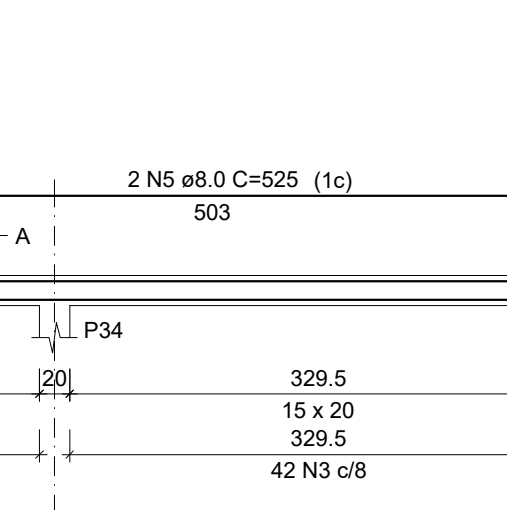
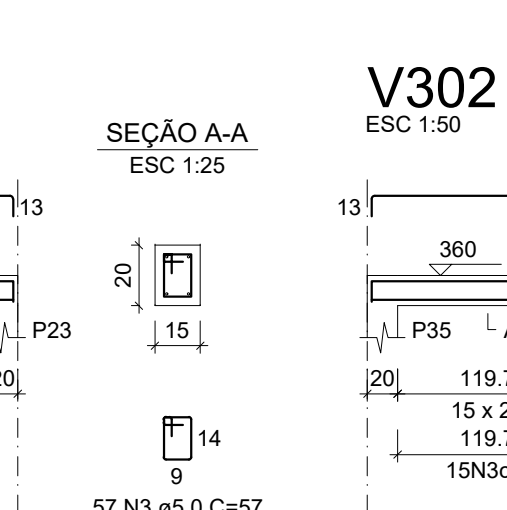
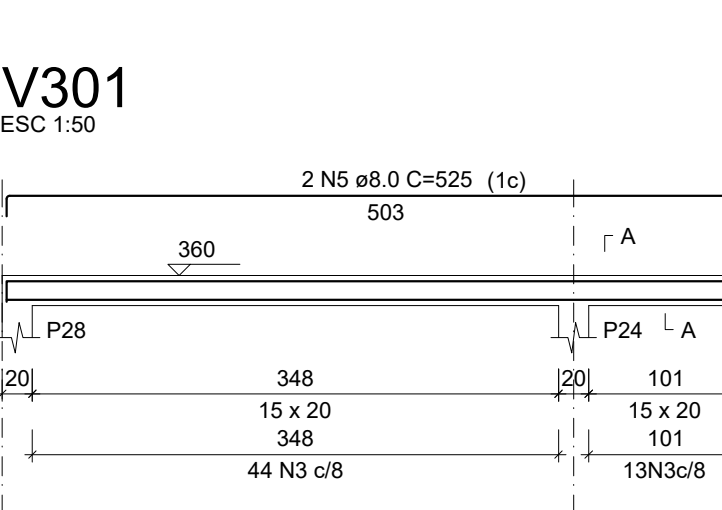
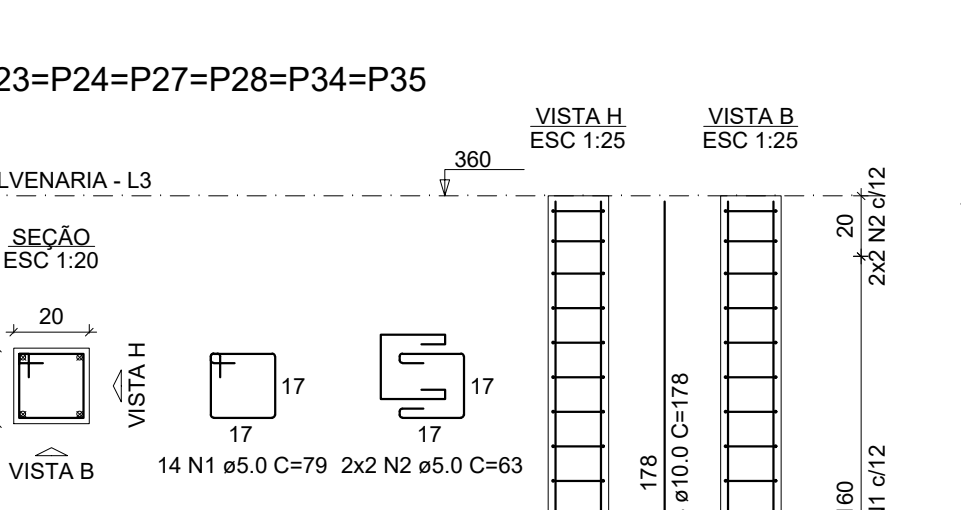
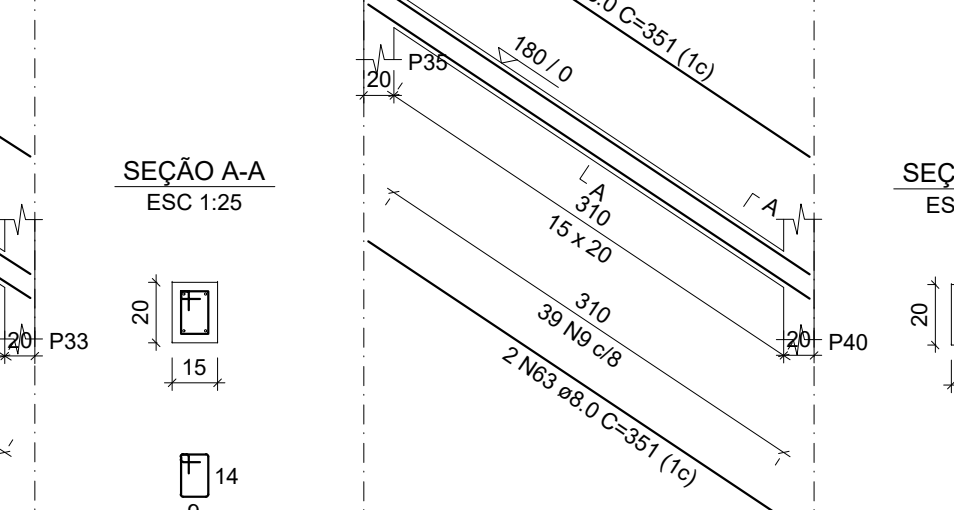
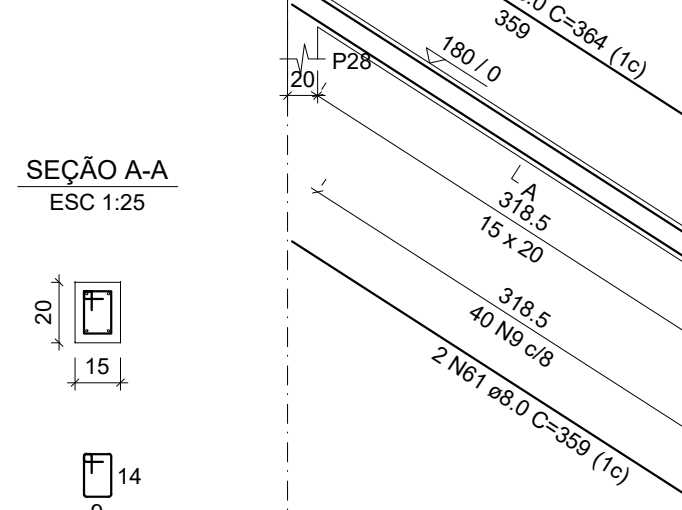
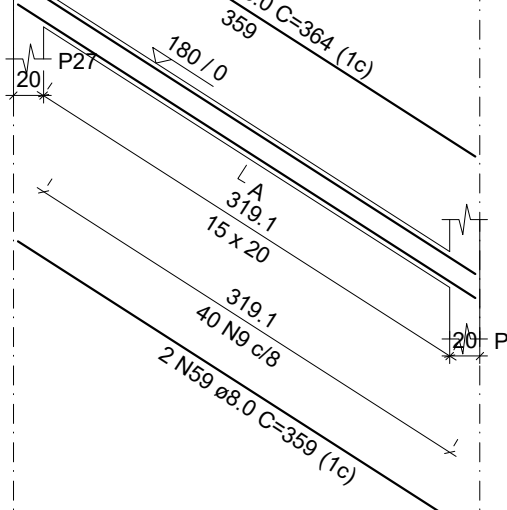
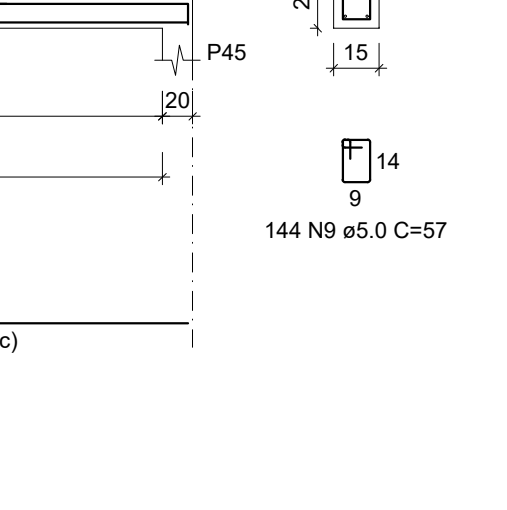
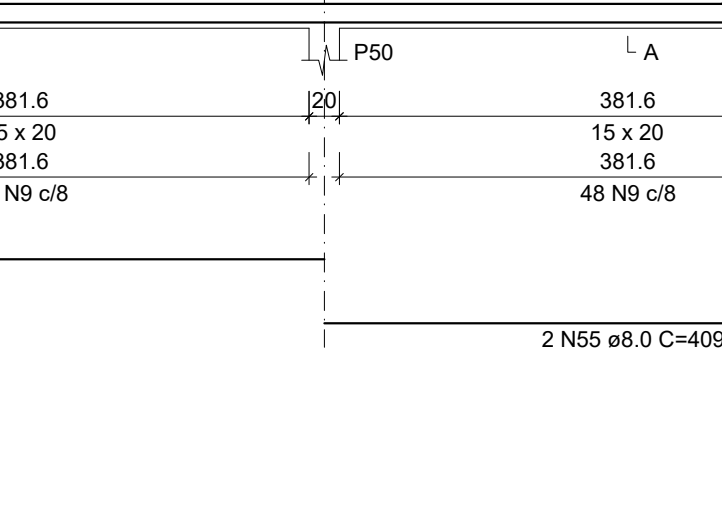
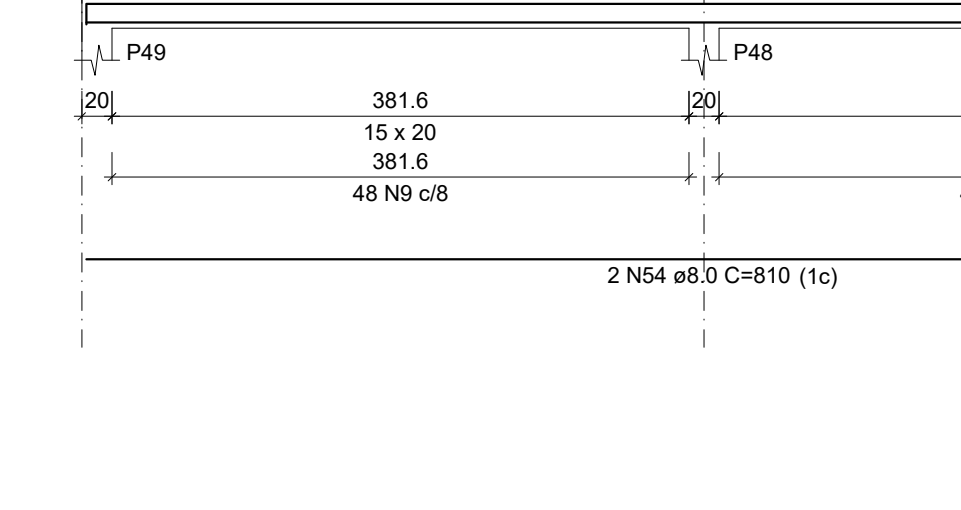
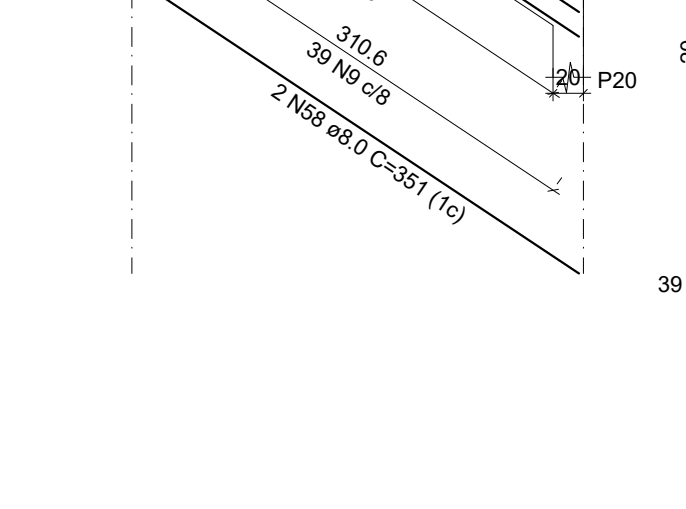
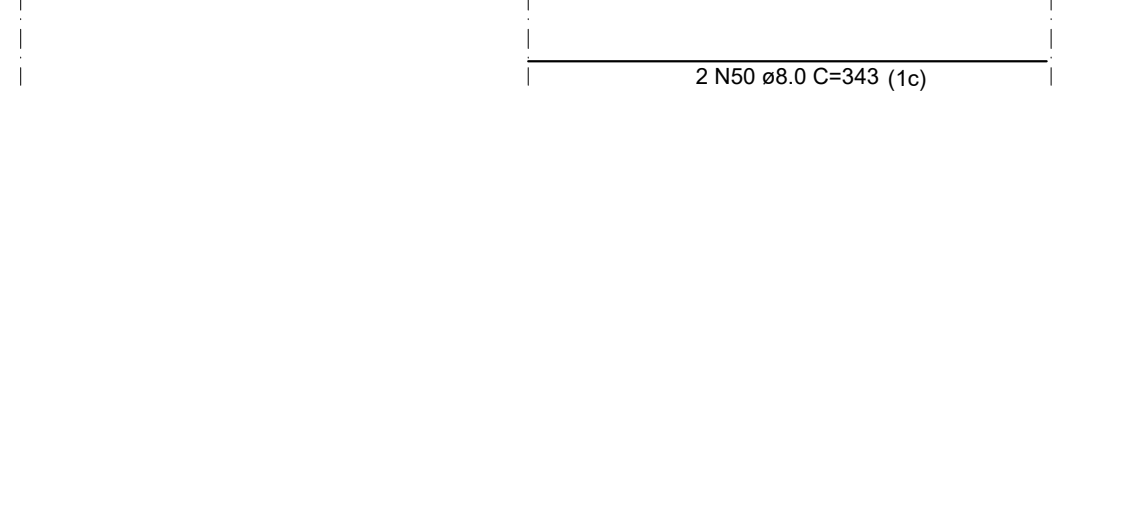
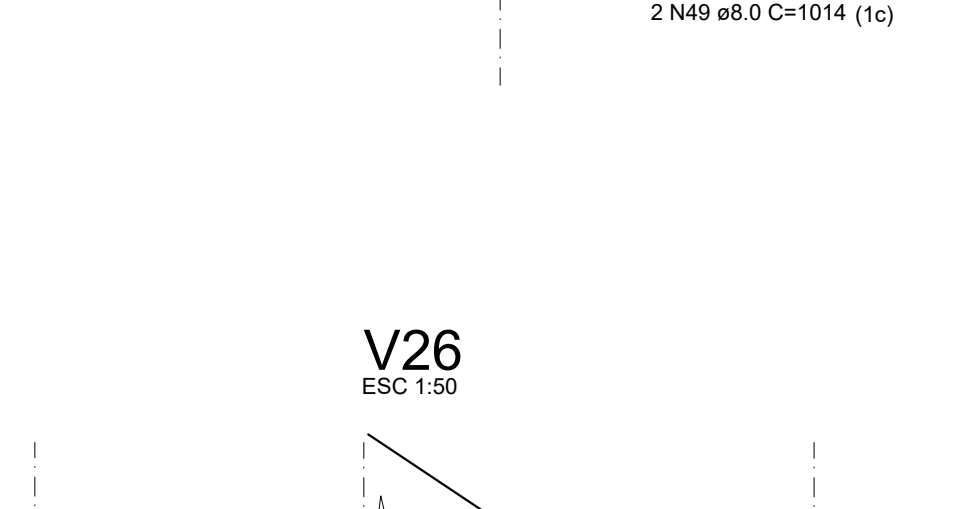
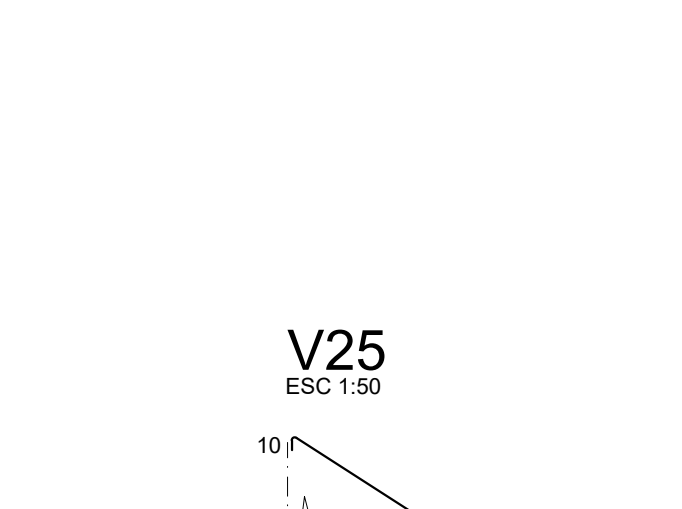
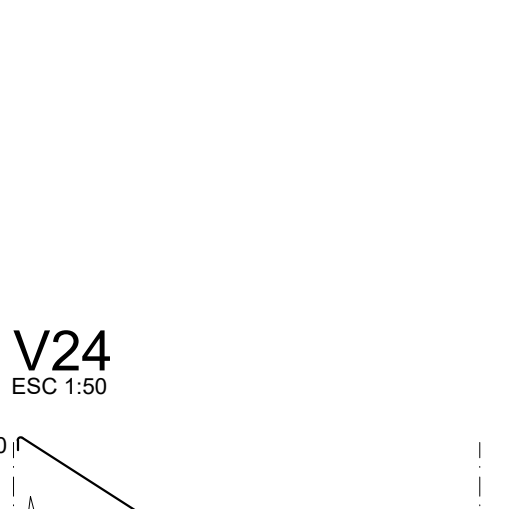
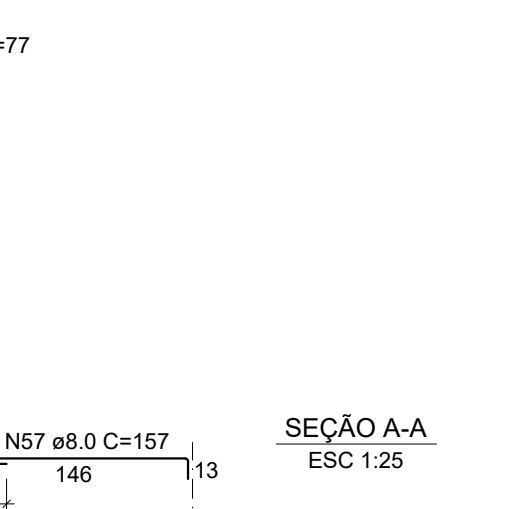
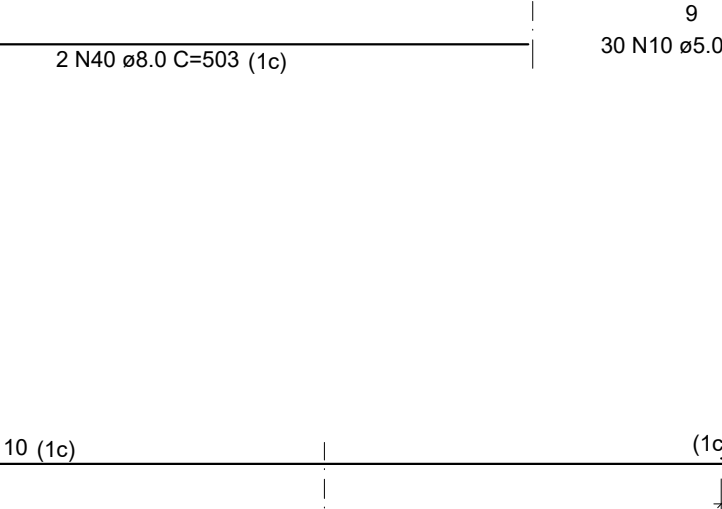
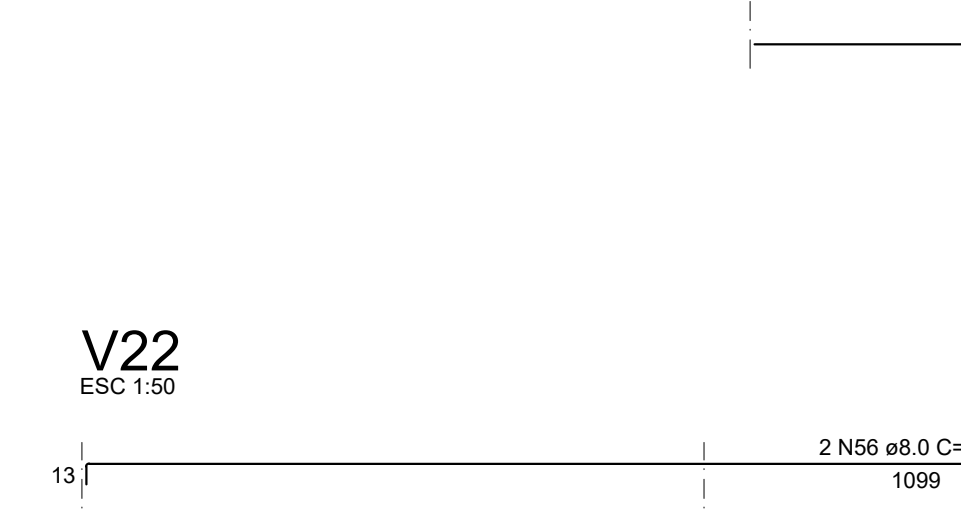
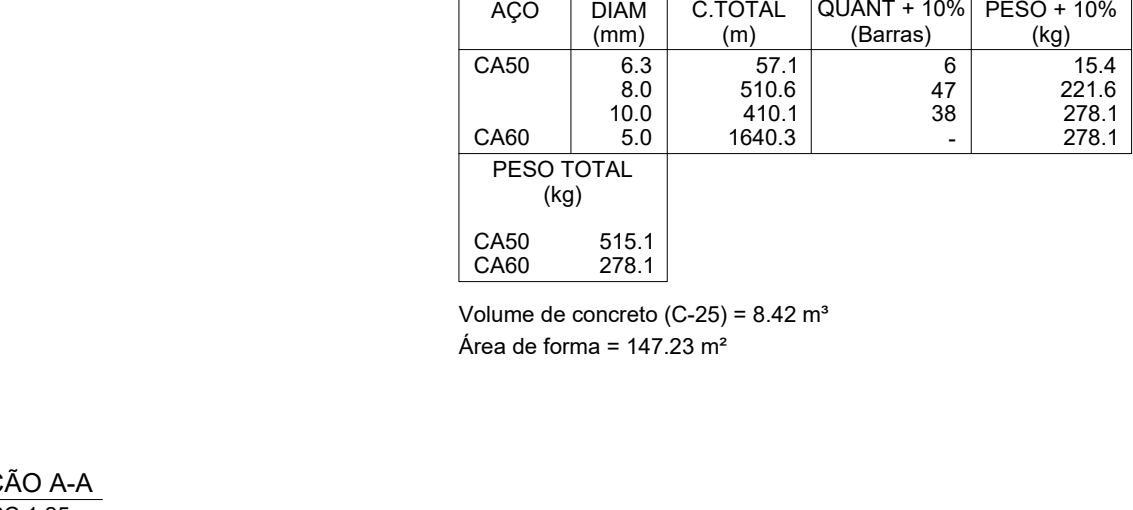
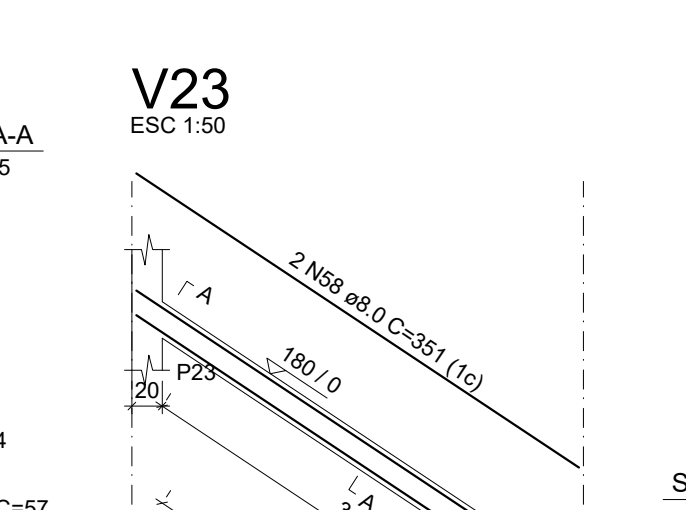
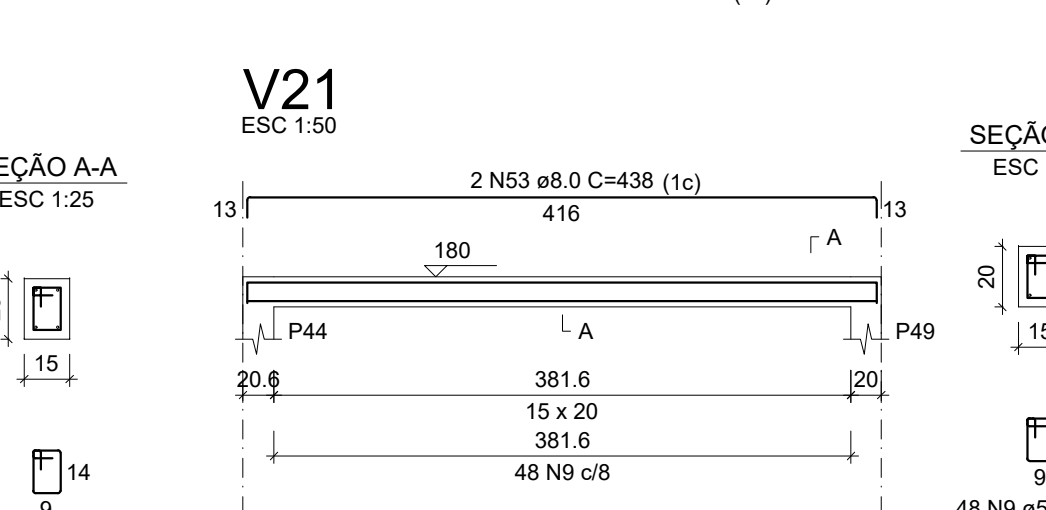
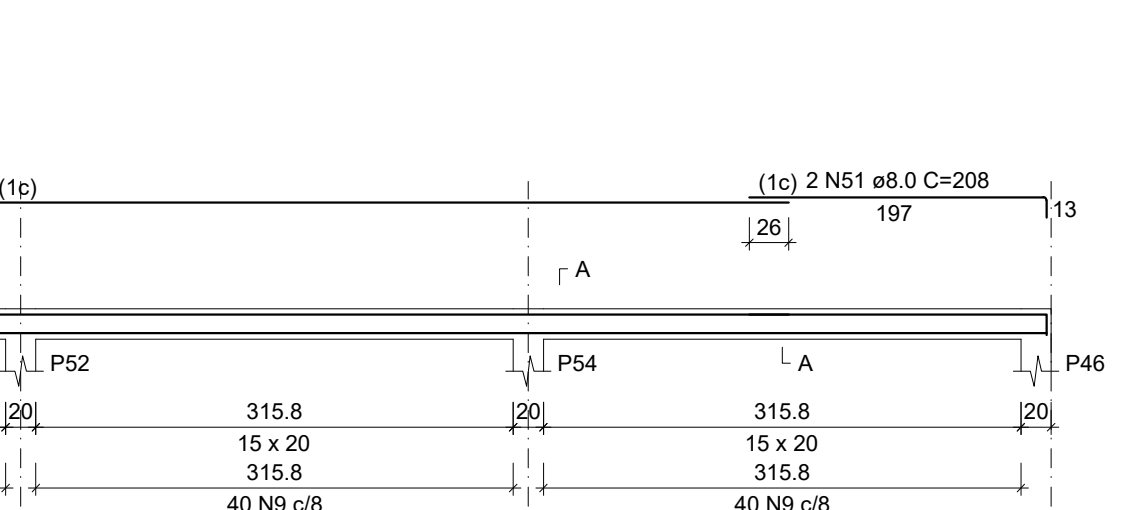
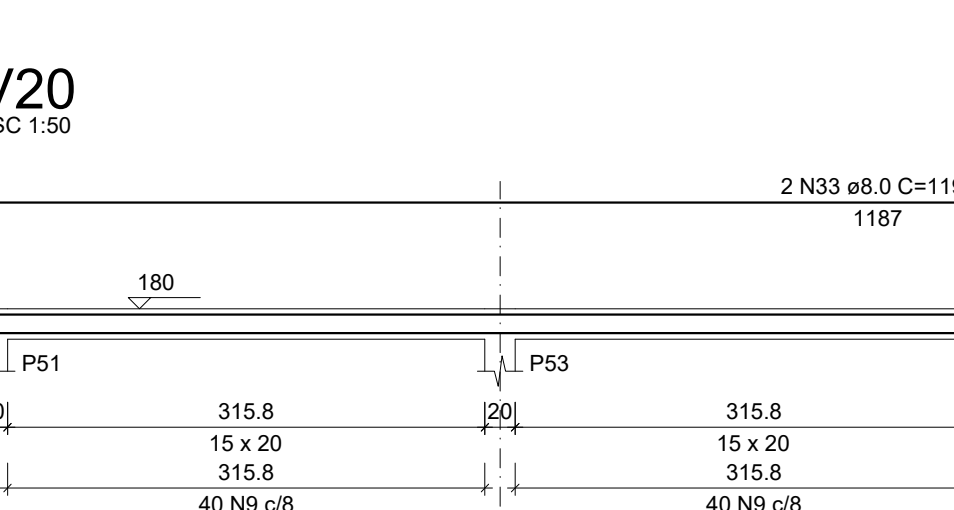
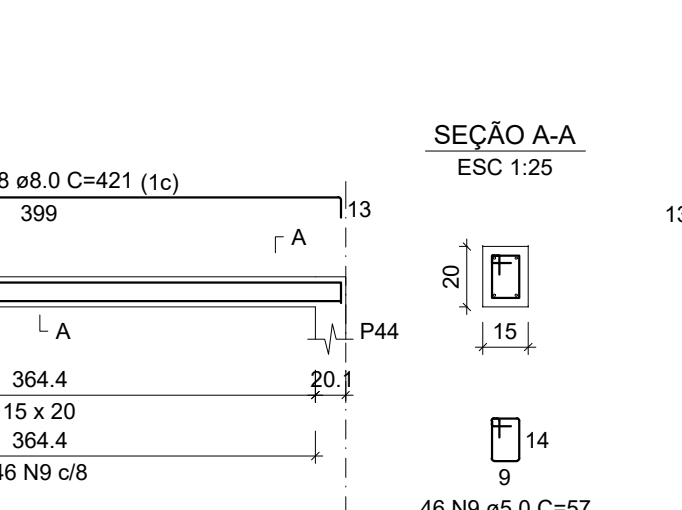
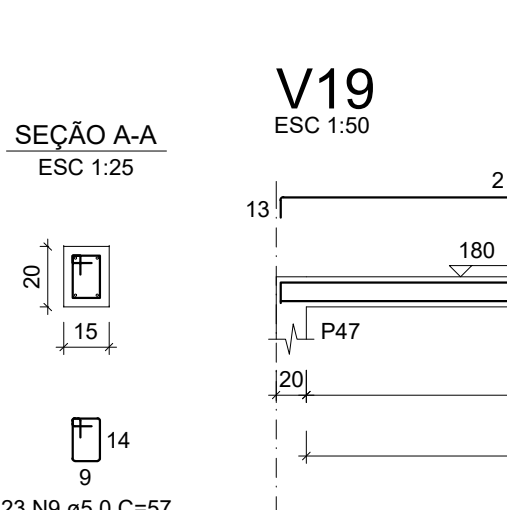
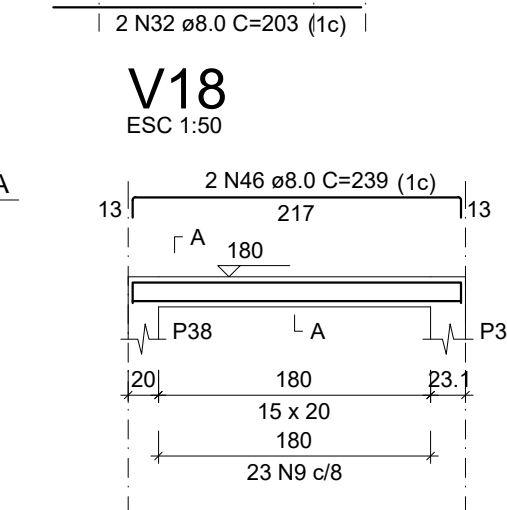
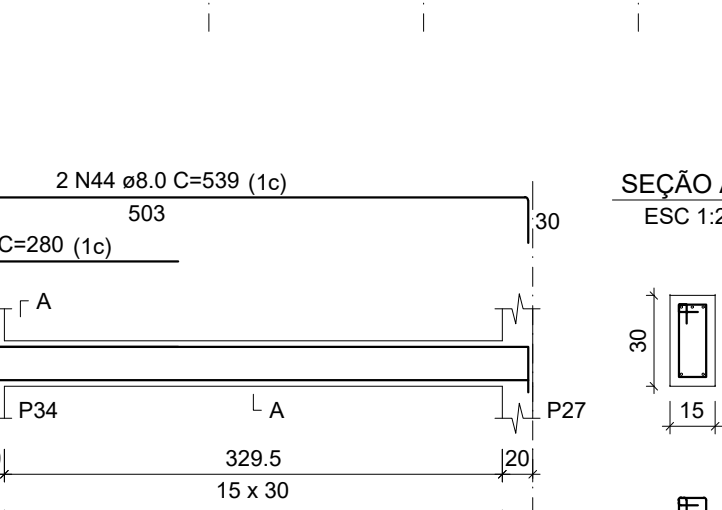
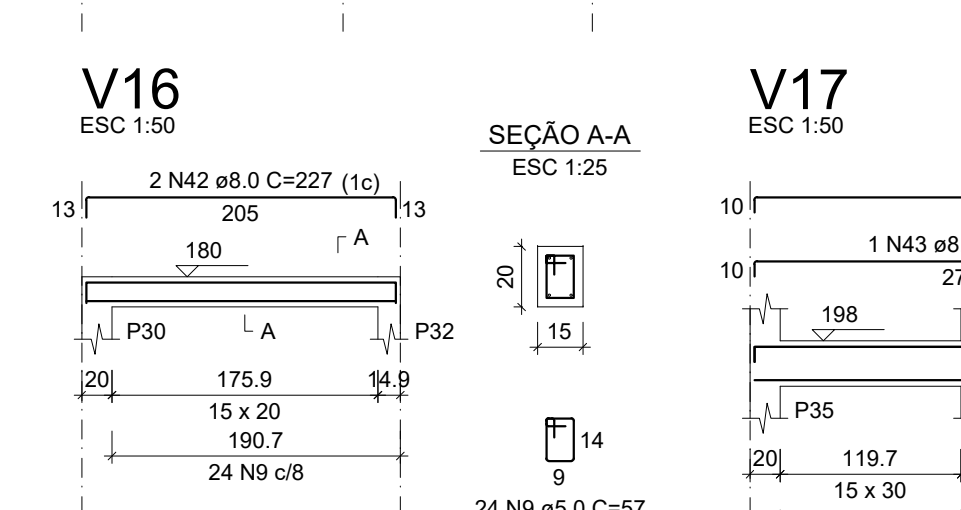
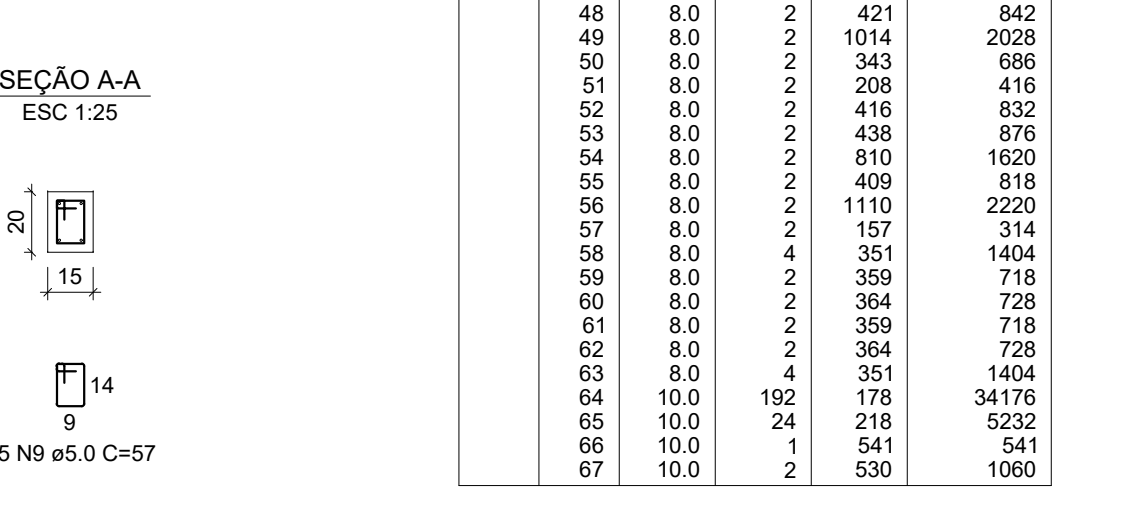
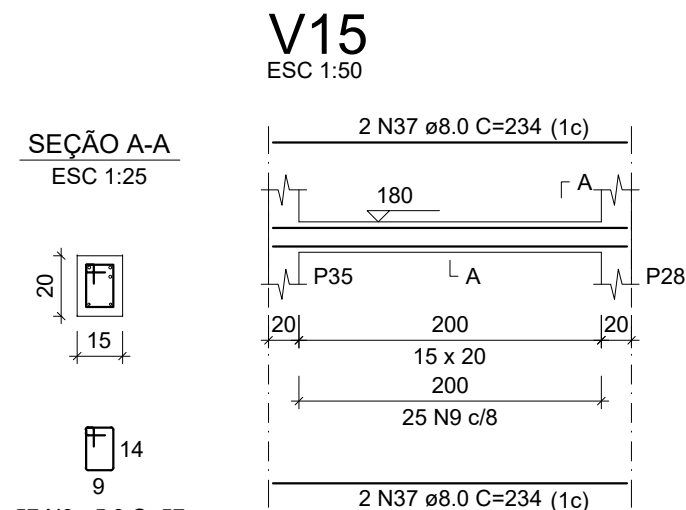
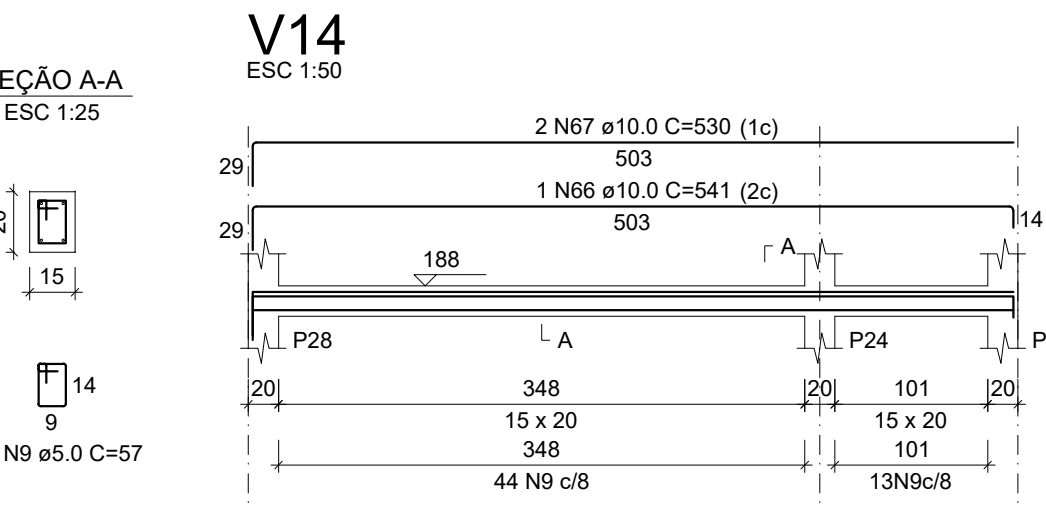
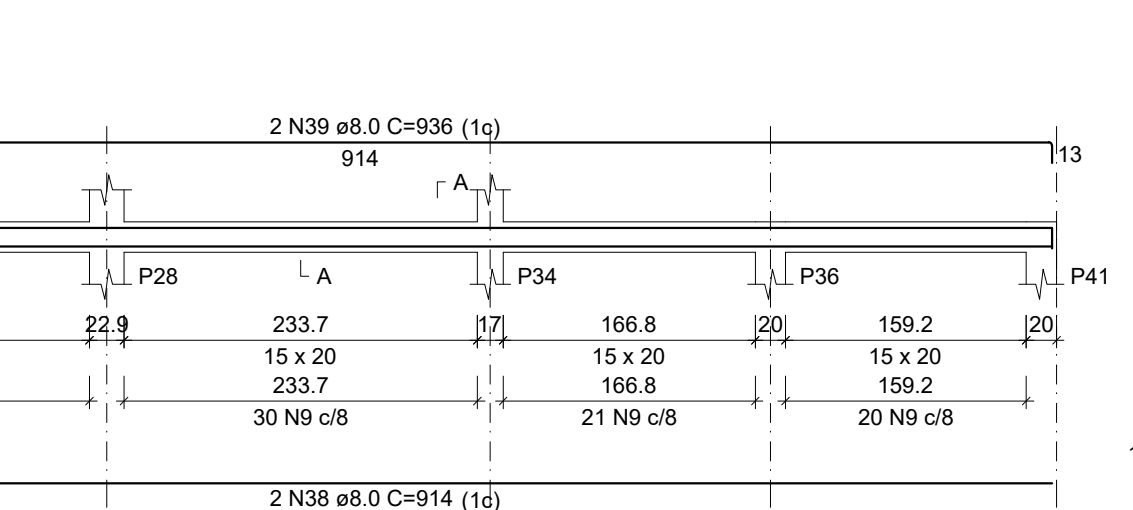
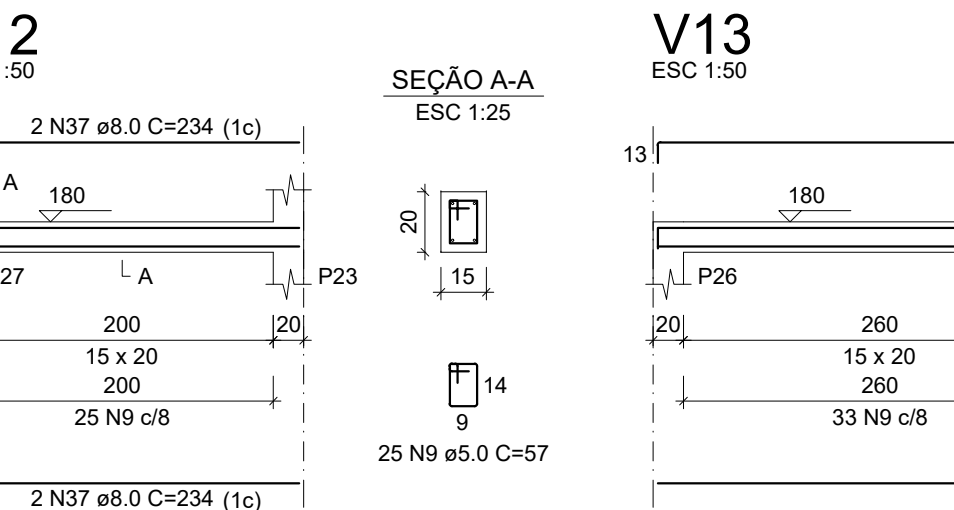
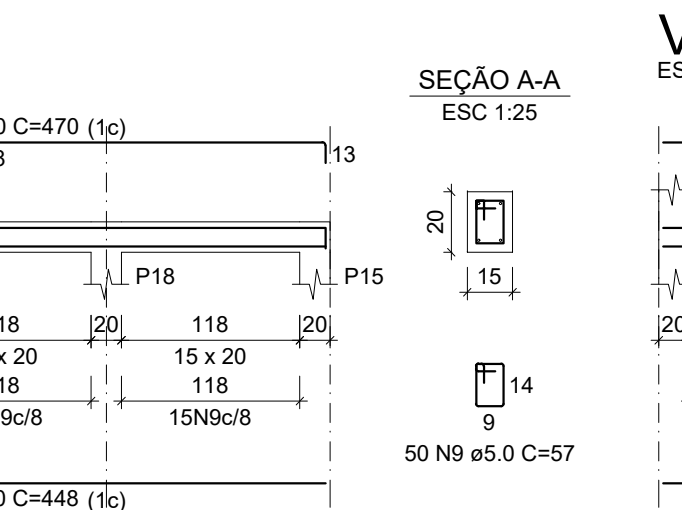
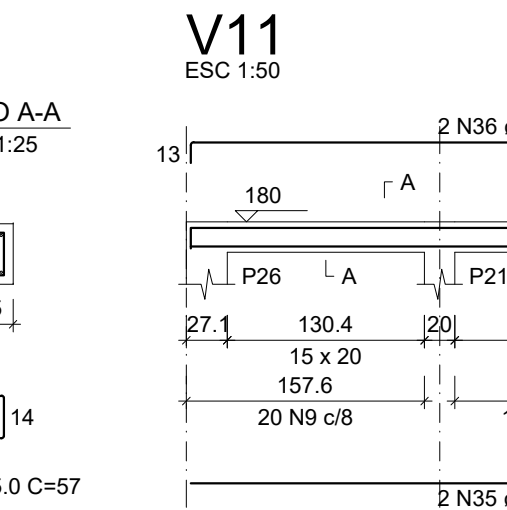
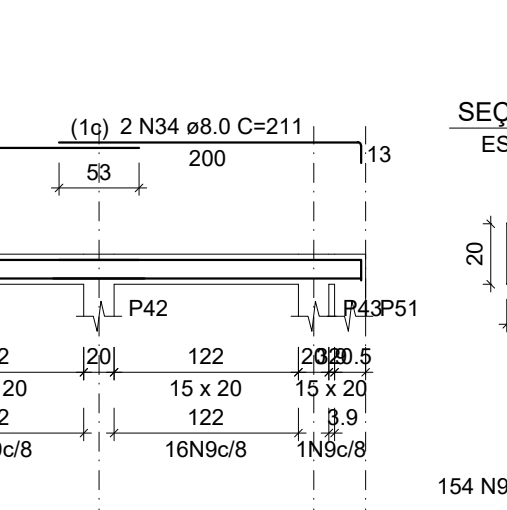
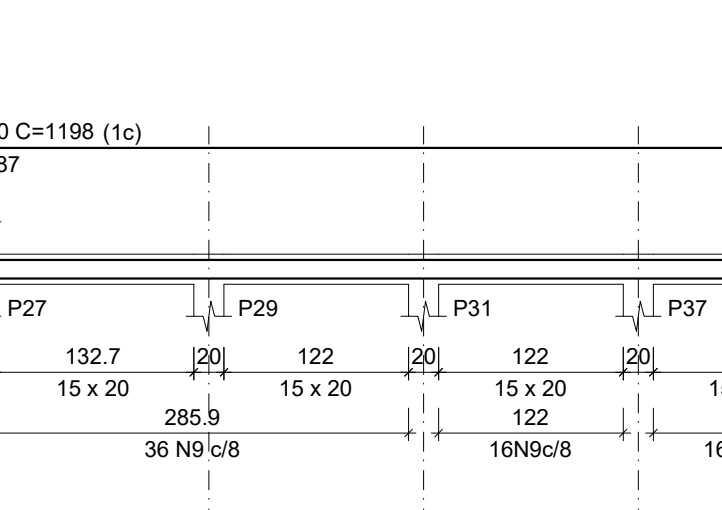
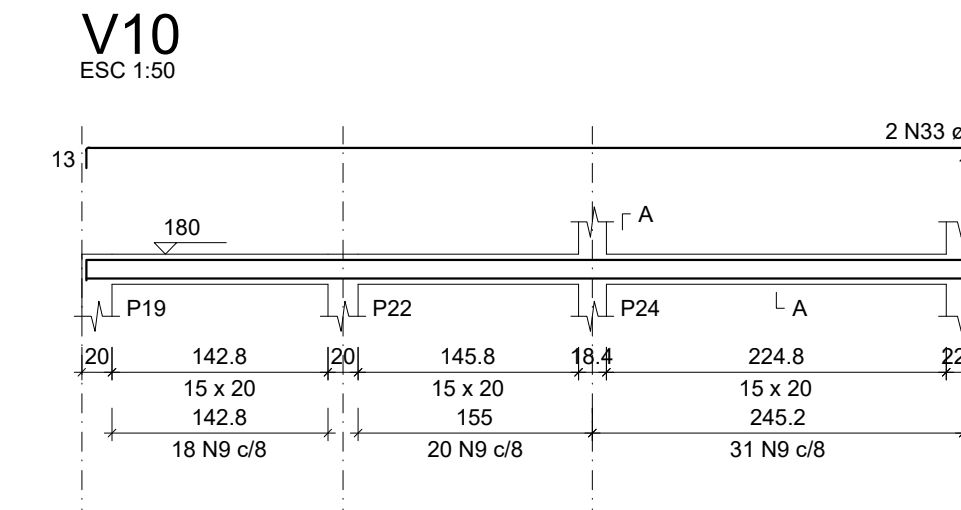
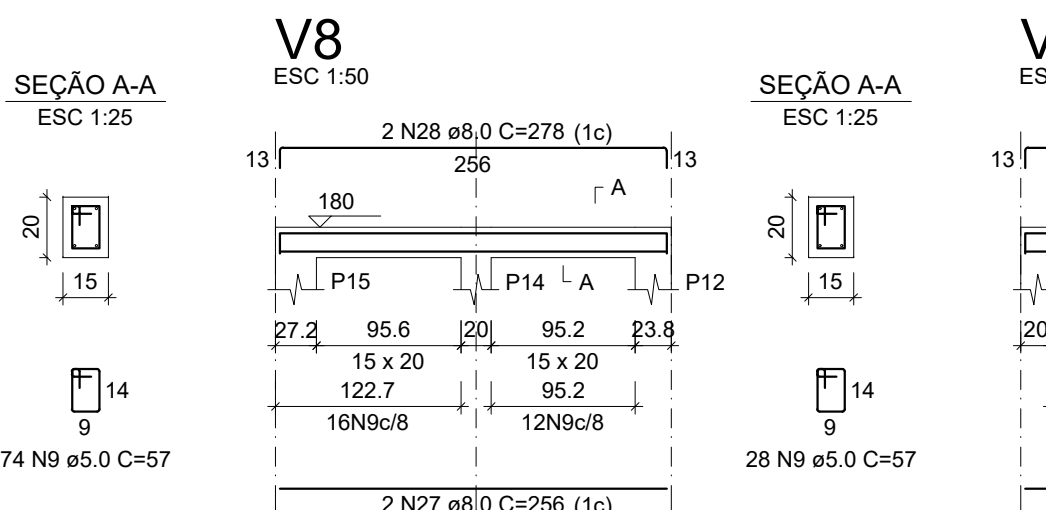
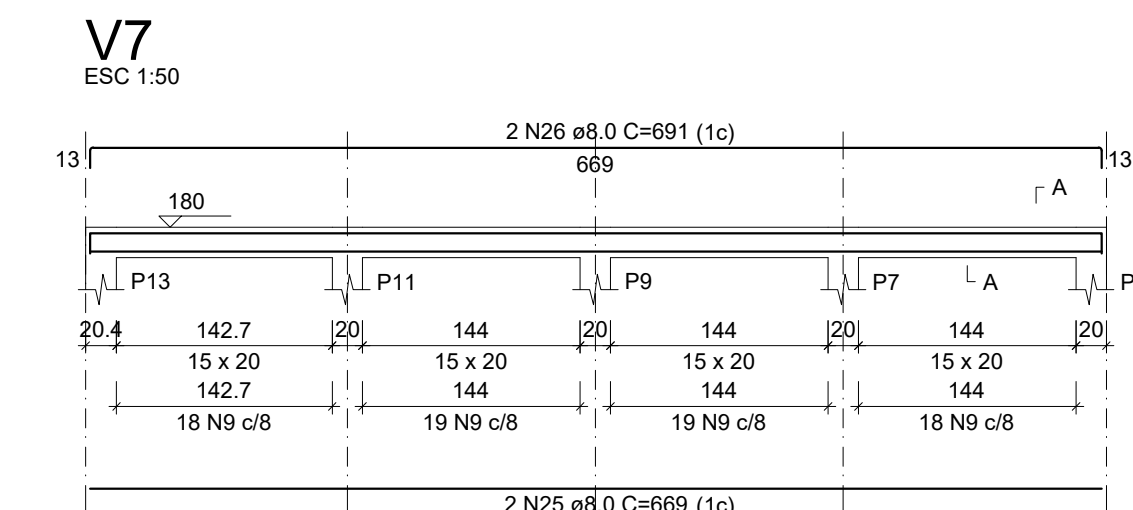
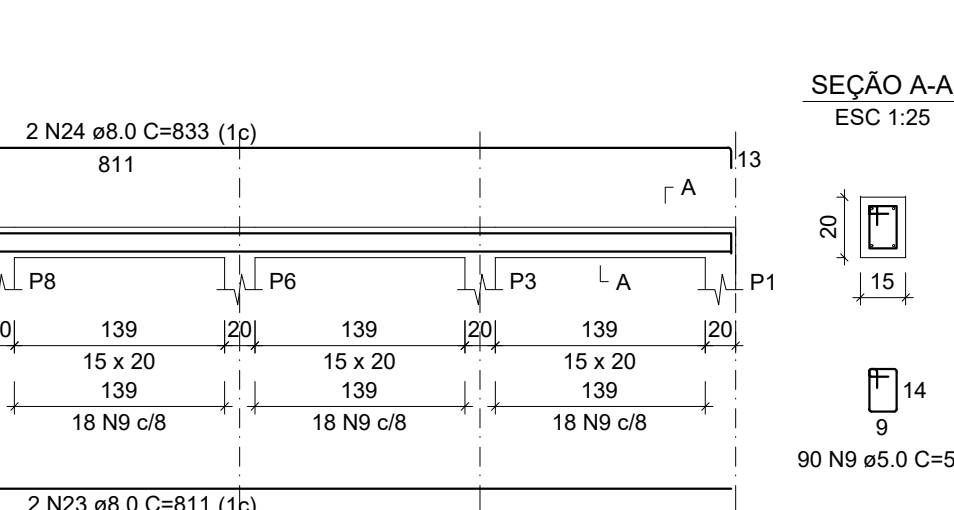
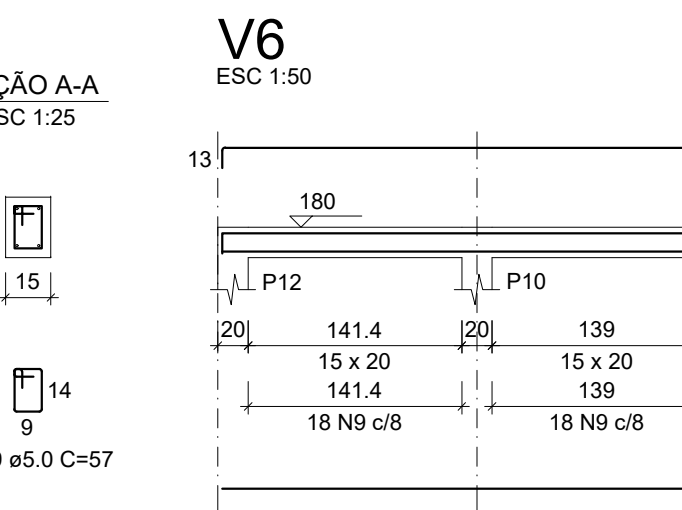
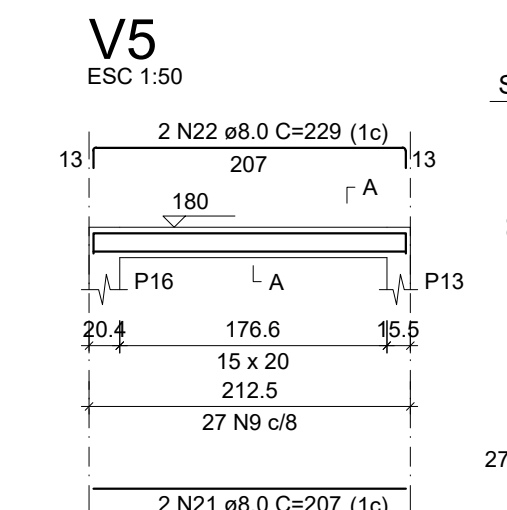
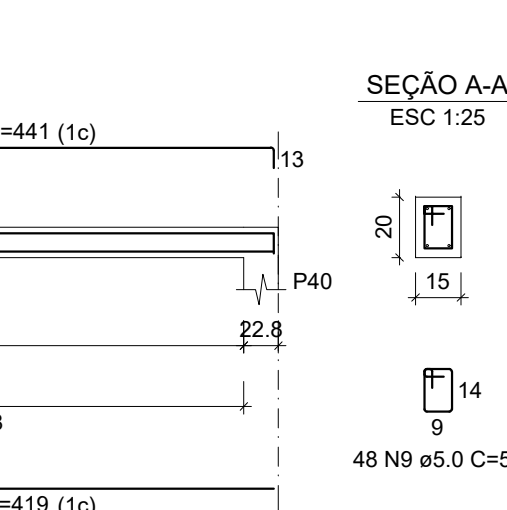
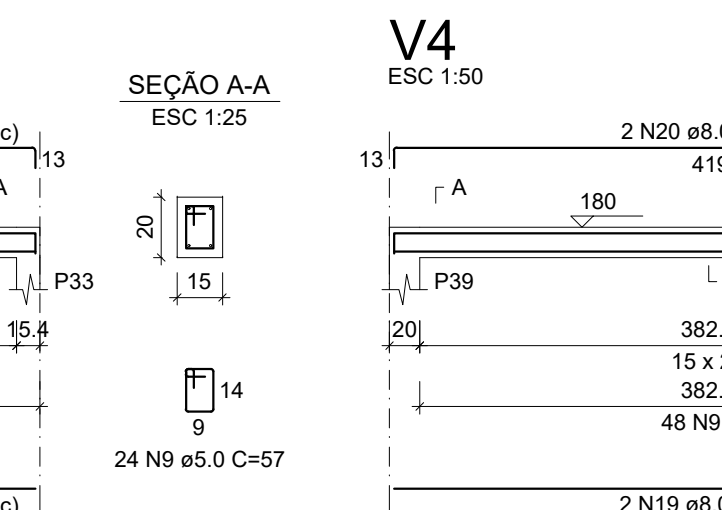
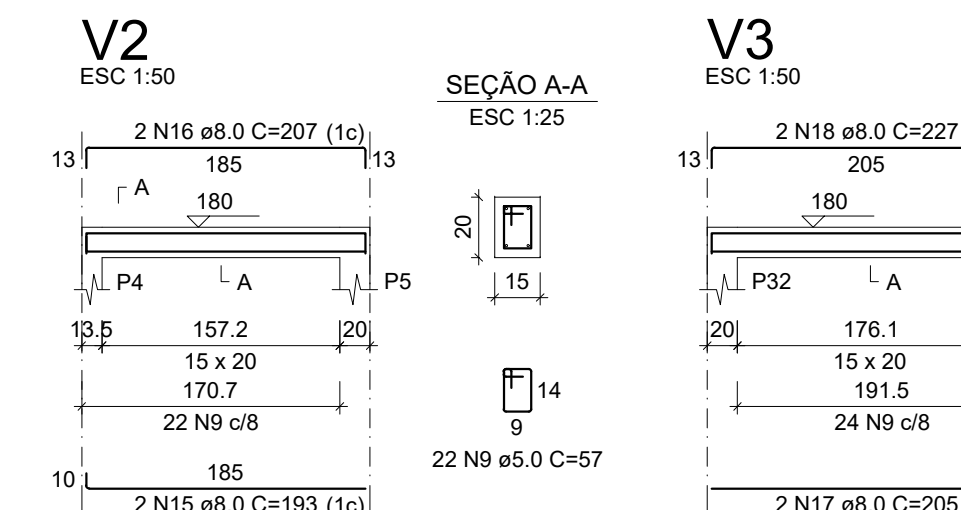
RELAÇÃO DO AÇO

Posições X	Posições Y	46p1
V2	V3	V4
V5	V6	V7
V8	V9	V10
V11	V12	V13
V14	V15	V16
V17	V18	V19
V20	V21	V22
V23	V24	V25
V26		

CAPO	N	DIAM (mm)	QUANT	C.UNIT (cm)	C.TOTAL (cm)
CAPO	1	5.0	10	VAR	VAR
CAPO	2	5.0	6	VAR	VAR
CAPO	3	5.0	12	VAR	VAR
CAPO	4	5.0	10	VAR	VAR
CAPO	5	5.0	11	VAR	VAR
CAPO	6	5.0	12	VAR	VAR
CAPO	7	5.0	7	VAR	VAR
CAPO	8	5.0	208	63	13104
CAPO	9	5.0	1381	57	78517
CAPO	10	5.0	30	VAR	2310
CAPO	11	6.3	11	VAR	211
CAPO	12	6.3	19	VAR	422
CAPO	13	8.0	2	233	466
CAPO	14	8.0	2	193	386
CAPO	15	8.0	2	207	414
CAPO	16	8.0	2	227	454
CAPO	17	8.0	2	219	438
CAPO	18	8.0	2	241	482
CAPO	19	8.0	2	229	458
CAPO	20	8.0	2	207	414
CAPO	21	8.0	2	229	458
CAPO	22	8.0	2	211	422
CAPO	23	8.0	2	207	414
CAPO	24	8.0	2	207	414
CAPO	25	8.0	2	207	414
CAPO	26	8.0	2	207	414
CAPO	27	8.0	2	207	414
CAPO	28	8.0	2	207	414
CAPO	29	8.0	2	207	414
CAPO	30	8.0	2	207	414
CAPO	31	8.0	2	207	414
CAPO	32	8.0	2	207	414
CAPO	33	8.0	2	207	414
CAPO	34	8.0	2	207	414
CAPO	35	8.0	2	207	414
CAPO	36	8.0	2	207	414
CAPO	37	8.0	2	207	414
CAPO	38	8.0	2	207	414
CAPO	39	8.0	2	207	414
CAPO	40	8.0	2	207	414
CAPO	41	8.0	2	207	414
CAPO	42	8.0	2	207	414
CAPO	43	8.0	2	207	414
CAPO	44	8.0	2	207	414
CAPO	45	8.0	2	207	414
CAPO	46	8.0	2	207	414
CAPO	47	8.0	2	207	414
CAPO	48	8.0	2	207	414
CAPO	49	8.0	2	207	414
CAPO	50	8.0	2	207	414
CAPO	51	8.0	2	207	414
CAPO	52	8.0	2	207	414
CAPO	53	8.0	2	207	414
CAPO	54	8.0	2	207	414
CAPO	55	8.0	2	207	414
CAPO	56	8.0	2	207	414
CAPO	57	8.0	2	207	414
CAPO	58	8.0	2	207	414
CAPO	59	8.0	2	207	414
CAPO	60	8.0	2	207	414
CAPO	61	8.0	2	207	414
CAPO	62	8.0	2	207	414
CAPO	63	8.0	2	207	414
CAPO	64	8.0	2	207	414
CAPO	65	10.0	24	218	5214
CAPO	66	10.0	24	218	5214
CAPO	67	10.0	2	530	1060

Armação positiva das lajes do pavimento Rampa (Eixo X)

Armação positiva das lajes do pavimento Rampa (Eixo Y)



RELAÇÃO DO AÇO

AÇO	N	DIAM (mm)	QUANT	C.UNIT (cm)	C.TOTAL (cm)
CAPO	1	5.0	160	57	9120
CAPO	2	8.0	2	1014	2028
CAPO	3	8.0	2	343	686
CAPO	4	8.0	2	1200	2400
CAPO	5	8.0	2	183	366

RESUMO DO AÇO

AÇO	DIAM (mm)	C.TOTAL (m)	QUANT + 10% (Barras)	PESO + 10% (kg)
CAPO	5.0	54.8	6	23.8
CAPO	8.0	91.2	-	15.3

Volume de concreto (C-25) = 0.38 m³
 Área de forma = 6.95 m²

RELAÇÃO DO AÇO

CAPO	N	DIAM (mm)	QUANT	C.UNIT (cm)	C.TOTAL (cm)
CAPO	1	5.0	84	79	6636
CAPO	2	5.0	24	63	1512
CAPO	3	5.0	272	57	15504
CAPO	4	8.0	4	2014	8056
CAPO	5	8.0	4	525	2100
CAPO	6	8.0	2	351	702
CAPO	7	8.0	2	371	742
CAPO	8	8.0	2	359	718
CAPO	9	8.0	2	379	758
CAPO	10	8.0	2	359	718
CAPO	11	8.0	2	379	758
CAPO	12	8.0	2	351	702
CAPO	13	8.0	2	371	742
CAPO	14	10.0	24	178	4272